

ALS500T Product Launch

CALI

CALIFORNIA ACCENT LIGHTING INC

Lighting for the Professional Designer

The Seamless System Has Arrived

CALI proudly introduces the ALS500T to the *alum*LEDs product line. The ALS500T is a new versatile and seamless system strategically designed for indoor applications such as cove lighting, accent lighting, and other indirect lighting applications.

ALS500T is a seamless system with a well-designed housing environment for cordless connections that eliminate scalloping dark spots between connections. ALS500T has an impressive high lumen output and a unique 0-10V dimming capability. This 100-0% dimming feature allows the luminaire to shut off and re-start at the designated dimming level.

This luminaire is offered with a variety of color temperatures, watts per foot, color finishes, and mounting options to fit your design.

ALS500T will bring your design vision to life, without a product's length restriction.

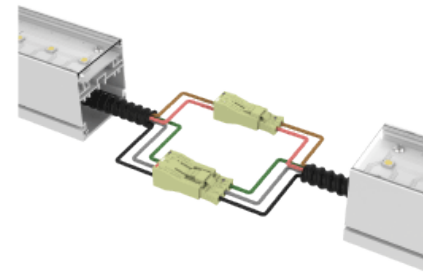
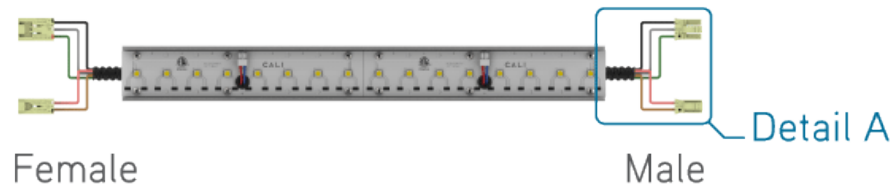
ALS500T built to the inch

- i. Need a 3'8" length, CALI will ship one length at 3'8"
- ii. Need a 12' length, CALI will ship 3 x 4'
- iii. Need 22' length, CALI will ship 5 x 4' + 1 x 2'
- iv. Need 39'2", CALI will ship 9 x 4' + 1 x 3'2"

Individual Fixture

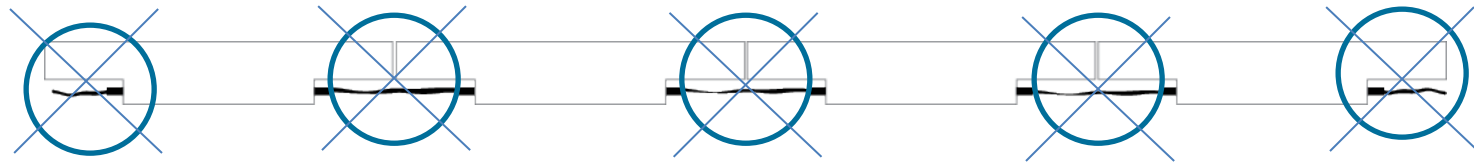


Individual Fixture with Disconnects



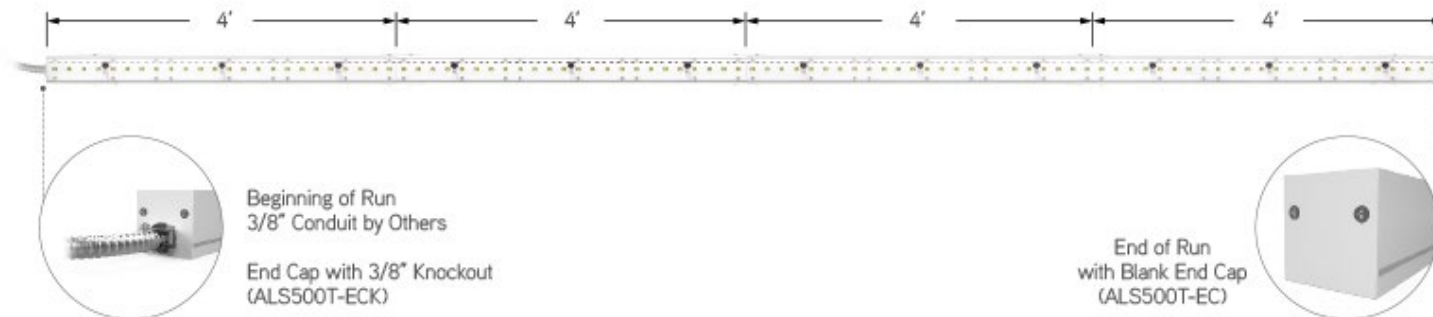
Detail C
Continuous Connection
(Dry Location)

When did cords become the standard for line voltage product?



Seamless system, no exposed cords:

- i. End Caps with Conduit Knockout
- ii. No Cord in between fixtures
 - a) Eliminate possibility of dark spots/scalloping



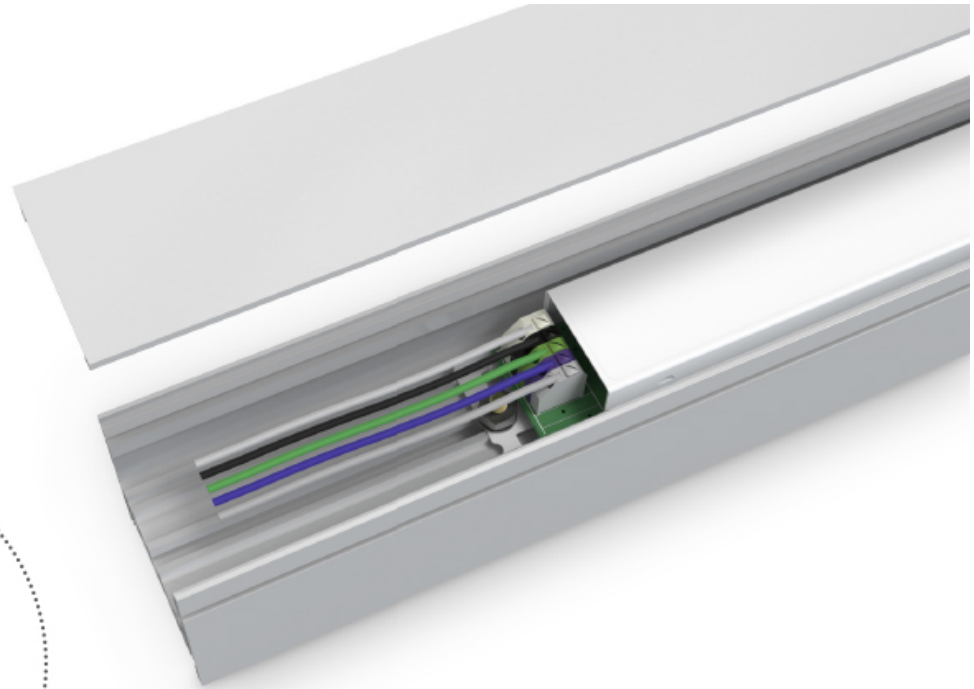
Full 0-10V Dimming Capability – 100% to 0% Dimming Driver

ALS500T is available in 120 or 277 volts with a dimmable integral driver. The driver has 0-10V dimming capabilities. Consult factory for other dimming protocols available.

- A. 100% to 0% Dimming Driver
 - i. Turns off at 10% dimming, lights up at 10% without the full brightness flash

Easily Replaceable Driver – Two Chamber System

Only a screwdriver and socket wrench required



*The driver is
easy to replace
in the most
seamless way.*

10-Day Quickship Available

We offer 10-day Quickship for 4' length fixtures for the below combinations:

ALS500T (Clear Lens) – SA – LED-3.0K - 8W - 10V – HO – DRY – UNV- 4'

ALS500T (Clear Lens) – SA – LED-4.0K - 8W - 10V – HO – DRY – UNV- 4'

ALS500T (Clear Lens) – BK – LED-3.0K - 8W - 10V – HO – DRY – UNV- 4'

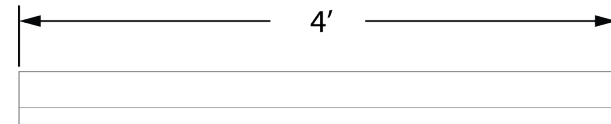
ALS500T (Clear Lens) – BK – LED-4.0K - 8W - 10V – HO – DRY – UNV- 4'

ALS500T (Frosted Lens) – SA – LED-3.0K - 8W - 10V – HO – DRY – UNV- 4'

ALS500T (Frosted Lens) – SA – LED-4.0K - 8W - 10V – HO – DRY – UNV- 4'

ALS500T (Frosted Lens) – BK – LED-3.0K - 8W - 10V – HO – DRY – UNV- 4'

ALS500T (Frosted Lens) – BK – LED-4.0K - 8W - 10V – HO – DRY – UNV- 4'



HOW TO ORDER OR SPECIFY Product Code: Note: (Fill in the blanks by selecting any option within the column)

- - - - - 10V - HO - DRY - UNV - - - - -								
SERIES	FINISH	LED	WATTS PER FOOT	DIMMING	OUTPUT	DRY OR WET	LUMINAIRE VOLTAGE	LENGTH OF FIXTURE
<i>Example: ALS500T-F</i>	<i>WH</i>	<i>LED-2.7K</i>	<i>8W</i>	<i>10V</i>	<i>HO</i>	<i>DRY</i>	<i>UNV</i>	<i>36"</i>
ALS500T (Clear Lens)	White (WH)	LED-2.4K	4 Watts (4W)	0-10V (10V) 100% to 0%	High (HO)	Indoor (DRY)	**120V-277V Line Voltage (UNV)	Specify Length
ALS500T-SF (Semi-Frosted Lens) (50% Frosted Lens)	Satin (SA)	LED-2.7K	5 Watts (5W)					
	Black (BK)	LED-3.0K	6 Watts (6W)					
ALS500T-F (Frosted Lens) (100% Frosted Lens) (No Pixelation - Line of Light)		LED-3.5K	8 Watts (8W)					
		LED-4.0K	12 Watts (12W)					
		LED-4.5K						
		LED-5.0K						
		LED-5.7K						

CALI

CALIFORNIA ACCENT LIGHTING, INC.
2034 E. Lincoln Ave. #431, Anaheim, CA 92806
ph. 800.921.CALI or 714.535-7900 \ fx. 714.535.7902
info@calilighting.com \ calilighting.com

© CALI. All rights reserved. CALI reserves the right to make changes or withdraw specifications without prior notice.