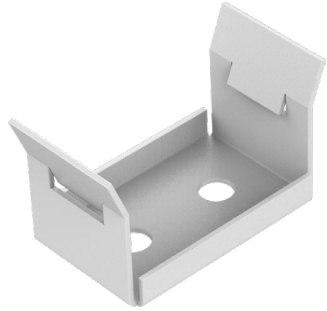
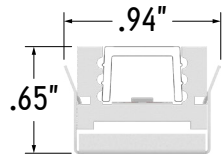


Perspective View



Assembled End Views



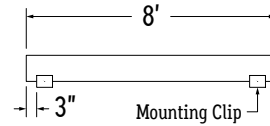
DRY LOCATION

1. Measure area where luminaire will be installed. Use a chalk line to ensure a straight installation. Mark location where mounting clips will be installed along chalk line.

2. Use 1 mounting clip every 4' or 2 if fixture is shorter than 8'.

Note: For outward or downward facing applications, use 1 mounting clip every 2'.

Note: For vertical applications, use a stopper at the bottom to prevent fixture from sliding.

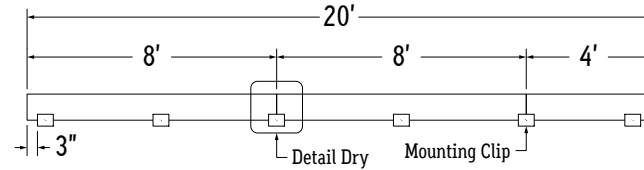


3. Use 1 mounting clip every 4' +1 if fixture is longer than 8'.

Example: 8' + 8' + 4' = 2 MC + 2 MC + 1 MC + 1 MC = 6 MC total.

Use a mounting clip at the joint between two fixtures.

Note: For applications facing outward or downward, use 3 mounting clips per fixture segment.



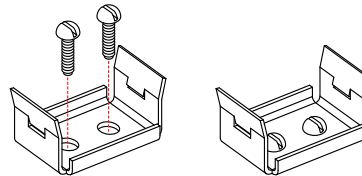
4. Lay mounting clips and pre-drill using proper drill bit for surface and screw size.

Recommendation: 8/32 x 1" screw.

Note: Allow 0.25" clearance for lateral expansion of assembled mounting clips.

Only install mounting clips on flat, even surfaces.

5. Screw mounting clips to surface, then snap fixture into mounting clips.



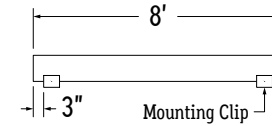
WET LOCATION

1. Measure area where luminaire will be installed. Use a chalk line to ensure a straight installation. Mark location where mounting clips will be installed along chalk line.

2. Use 1 mounting clip every 4' or 2 if fixture is shorter than 8'.

Note: For outward or downward facing applications, use 1 mounting clip every 2'.

Note: For vertical applications, use a stopper at the bottom to prevent fixture from sliding.



3. Use 2 mounting clips per fixture.

Example: 8' + 8' + 4' = 2 MC + 2 MC + 2 MC = 6 MC total.

Push fixtures together at each wet location connection, leaving a 0.5" gap between fixtures.

Note: For applications facing outward or downward, use 3 mounting clips per fixture segment.

